


# NELSON SUTER ART SOCIETY

July 2018 - NEWSLETTER

 [www.facebook.com/nelsonsuterartsociety](http://www.facebook.com/nelsonsuterartsociety)



## PRESIDENT'S REPORT

Kia Ora Nelson Suter Art Society Members and followers,

It only seems a wee while ago that we welcomed in the New Year and now we are in the middle of winter and Light Nelson 2018 has sadly been and gone.

Four of our NSAS members took the opportunity to experiment with light and exhibited in the McKee Gallery over this period. Beautiful! Then we welcomed in Philippa Turnbull's Crewel Work exhibition, featuring original embroidered creations from as far back as the 1600's! We felt privileged to see the work of such a wonderful lineage of artists from England and America brought by Philippa to share with us. Stunningly, we featured our NMIT Graduate Award Winners earlier in the year along with other successful exhibitions welcoming new members. Upcoming we have our local hero, Wanda Tait, with an invited 'Revue'.... can't wait!

With all of this exciting activity taking place, I am happy to report that the NSAS recorded total sales exceeding \$34000 since the beginning of our financial year (End December 2017) with payments of over \$23000 going back to

artists! Love this! A proportion of the remainder goes to The Suter as per our agreement and the rest to the NSAS to continue the Society into the future (sounds grand, but in reality this includes things like the upcoming re-paint of the McKee Gallery, electricity bills and rent, etc).

Speaking of the daily running of the Society reminds me to thank, whole heartedly, all of those who volunteer time and expertise to maintain our local Art Society. Thank you!

If you are keen to get involved, whether it be exhibiting or supporting in any way, shape or form, feel free to make enquiries via our contact list later in the newsletter (Page 8).

Here's to the remainder of 2018 being as successful as the beginning...

Get creating. Spring Exhibition receiving day is 5th September, with guest artist Rewiti Arapere!

Warm Regards,

Larisse Hall  
NSAS President 2018

## CONTENTS

**Page 1** • President's Report

**Page 2** • President's Report  
• Autumn Exhibition

**Page 3** • Guest Artist Profile

**Page 4** • Upcoming Exhibitions

**Page 5** • New Committee  
Artist Profiles  
- Cathy Jones  
- Jennifer Walker  
- Peter Copp

**Page 6** • New Members  
• New Members' Artists  
Profiles  
- Cameron Blaisdell  
- Ronnie Martin

**Page 7** • New Members' Artists  
Profiles  
- Sarah Arnold & Yael Pochon  
- Marg Fairs  
- Joanne Marcon

**Page 8** • Subscriptions  
• Newsletter Contacts  
• Committee

# NOTICES

## New Travelling Artists' Page.

In this edition we have included a space where members creating and/or visiting exciting art work away from Nelson can share their experiences, learnings and inspiration with others.

Please book in ahead with the editor ([cathy.jones@xtra.co.nz](mailto:cathy.jones@xtra.co.nz)) as space will be limited.

## Working Bee Advance notice.

Members required for a working bee to repaint the McKee gallery walls up to the 2 metre level on 3rd September 2018 starting at 9:00 am.

Please contact Nick Duncan at [nsduncan@xtra.co.nz](mailto:nsduncan@xtra.co.nz) to indicate your availability and advise if you can provide your own roller and paint tray. The society will provide roller sleeves and other materials.

## Artist Profiles for NSAS website.

Members, particularly new members, please send updated artist profiles to our webmaster Terence Blyth on [terence@compute.nz](mailto:terence@compute.nz).

Look at the Artists section on [www.nsas.net.nz](http://www.nsas.net.nz) if you want to see what others have submitted.

You will need a photo of your work (or you with your work) and a blurb.

# ADVERTISEMENT

## CREATIVE JOURNEYS WORKSHOPS

PAINTING, MIXED MEDIA, TEXTILES & MORE.

[WWW.CREATIVEJOURNEYS.CO.NZ](http://WWW.CREATIVEJOURNEYS.CO.NZ)

### PAINTING

- Regular weekly classes "The Next Step"
- One day workshops.  
Painting with Oils. Sun 9 September.
- Weekend Intensive: Colour, Light + Space 3-4 Nov.
- Artists Mentoring Programme.

Tutor: David Ryan MA. BA. Dip. Ed.

David is a traditionally trained full time professional artist and former senior lecturer in art at RMIT University, Melbourne, with over two decades of teaching experience and over 22 solo exhibitions and over 31 curated group exhibitions in New Zealand and overseas.

### MIXED MEDIA / TEXTILES

- Classes, Workshops, Mentoring
- Mixed Media Art Journal w/shop
- Tutor: Ronnie Martin

### SUSTAINABLE FIBRE ARTS

- One day and weekend workshops
- Create an Indigo Vat. Sun 14 Oct.
- Tutor: Jo Kinross

Further Info. [creativejourneys.co.nz](http://creativejourneys.co.nz)

Jo. 03 5466791. 0211 332 995

Discount for NSAS members on workshops.

## GUEST ARTIST PROFILE

### Reweti Arapere

Born in Tauranga and residing in Palmerston North, Reweti Arapere has Ngāti Raukawa, Ngāti Porou and Ngāti Tuwharetoa iwi affiliations. Having attended Kohanga Reo, he was also a first-generation Kura Kaupapa student, taught entirely in Te Reo Māori. In 2009 Arapere completed a Master of Māori Visual Arts at Massey University School of Māori Visual Arts, Palmerston North. He held his first solo exhibition Te Poho o Reweti at Bowen Gallery Wellington in 2009. This led to the inclusion of his work in the group exhibition Urban Kainga at the City Gallery Wellington in 2010. Following this he undertook a residency at Queen Elizabeth College, awarded by the Ministry of Education's Artists in Schools programme.



He has also attended international indigenous artists' gatherings, travelling to Hawaii in 2007 for Piko, Tahiti in 2010 for Putahi, and Mexico City in 2011 for El Barroco de Aotearoa. In his words:

"My art practice is committed to presenting Māori narratives in a contemporary light. I blend customary Māori art forms with graffiti style influence, representing young Māori who identify with both Māori and metropolitan culture."



## ADVERTISEMENT

### IMPRESSIONS NATIONAL ART AWARDS 2018

- Open to NZ Residents;
- Paintings (wet & dry media), drawings & original prints;
- Must have been created within the last two years;
- Photography, installations and digitally created media are excluded and the essential component of any mixed media must be painted, drawn or hand-printed;
- Selection is by email photograph. Applicants may submit up to 3 works for consideration. Each selected work is subject to a \$20 entry fee (no fee is levied for works not selected);
- Applications close 31 August 2018;
- Further details can be downloaded from the Impressions Website [www.impressionsnelson.co.nz](http://www.impressionsnelson.co.nz)

# UPCOMING EXHIBITIONS

## 26 July-12 August

### **"Revue" by Wanda Tait**

*Note change of date from that printed in June Newsletter.*

NSAS has invited Wanda, a wellknown local artist and longtime participant in Nelson exhibitions, to be a guest exhibitor in the McKee Gallery. She will show older and new works. Her paintings are generally semi-abstract using the adaptability of acrylics and collage. She finds excitement in the unexpectedness and energy of the juxtaposition of defined edges overlaid with paint and differing surfaces. She tries to connect viewers to her subject matter through her own emotional or conceptual response to it.

Wanda attended hobby classes in drawing and painting at NMIT and has exhibited mainly locally for the past 30 years. In 2015 the Bishop Suter Gallery purchased one of her works for inclusion in the permanent collection.



## 13 August- 2 September

### **"Double Take" by Natalia Chaplin**

An exhibition of pastel portraits of people you might just recognise – singers, actors, producers etc. With a focus on the eyes, the exhibition focuses on the fun of art while giving you the opportunity to see the texture and vibrancy of pastel. Guess them all correctly and be in to win a piece of Natalia's art when the winner is drawn at the end of her New Zealand tour.

## 12 September- 30 September

### **NSAS Spring Exhibition**

This is one of our two big exhibitions of the year, with selected works hung in the McKee and Potton Galleries. Our Guest artist this Spring is Reweti Arapere (see profile on Page..). Artists, please note that Receiving Day is 5 September.

## 1-21 October

### **New Members Exhibition**

## 22 Oct - 11 November

### **"EARTH-ED" by Francie Heathfield & Dorothy Meharry (MFA).**

These paintings are all derived from Planet Earth, showing how paintings evolve from the impetus and images that Earth delivers, to become real objects through the artists' creative flow and expression.



Meharry will also present a retrospective of work derived from her 20 year relationship with Auckland-based firm 'Art Associates'. It is hoped that this cohesive body of paintings will facilitate understanding of her practice. These works have not previously been seen in one collection.





## NEW MEMBER

We have recently welcomed the following artists as new members to our Art Society -

*Georgie Hoby Scutt (who has also become a committee member).*

## NEW COMMITTEE MEMBER PROFILES

### Georgie Hoby Scutt

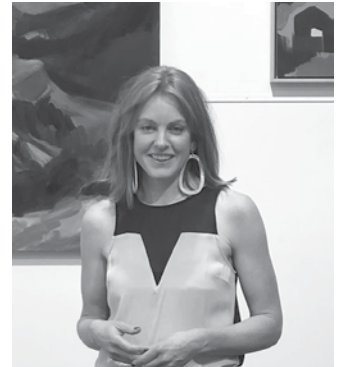
I work across a range of media - painting on linen, plywood and canvas; also producing screen prints, collage and illustrations on paper.

Informed by my pattern design background, I develop distinctive colour palettes and paint with loose, expressive brushstrokes. I draw from the beautiful natural surroundings to produce landscape paintings and indulge my passion for fashion and textiles with portraits, still lifes and abstract works.

For me, the creative process is intuitive, exploratory, challenging and hugely joyful.

I currently live in Nelson with my husband and three children. I began painting in 2016 and now spend wonderful hours producing original artworks from my home studio in Nelson.

I am happy to contribute my energy and help in developing our arts community through my role on the NSAS committee.



### Sandy Paterson

*Bachelor of Visual Art & Design 2009*

As an Art Maker living in Wakefield I am looking forward to being involved and contributing to the NSAS Society.

My work is varied - inspired by Nature, Humanity, Philosophy & Design.

I see art everywhere and enjoy expressing it via many formats such as paint, photography, ceramics and other craft. I've had three entries accepted into World of Wearable Art, one piece purchased for their private collection and publication.

I love using my hands to create unique pieces and am always learning, exploring and on the lookout for something beautiful and thought provoking to portray.



## Lisa Chandler

"Hello fellow NSAS members, I am in Leipzig, Germany until the end of this year. I am working in a studio in the Spinnerei – a large art hub based in a disused Cotton Mill in the suburb of Plagwitz. Plagwitz, a funky area to the west of the city, is full of industrial culture and creative businesses, and is an inspiring place to live and work. I love cycling down graffiti lanes and past huge abandoned brick factories on my way to the studio every day.

What am I up to in Leipzig? Well . . . late in 2016 I put forward a proposal to The Suter Art Gallery Te Aratoi O Whakatū for a solo exhibition around the theme of protesting, an area of interest that developed during my time on an artist residency in Leipzig early 2016. My proposal was accepted and the exhibition is booked for February-April 2019.

This has given me 2 years to develop the new series. Starting early in 2017 I created a series of small works on paper - trialling compositional ideas, new ways of mark-making and combinations of different imagery. I then began a series of 8 large paintings some of which were almost resolved before I headed back to New Zealand for the summer, and some just started. [Insert Photo 2. within text somewhere here....good size please]

I was in New Zealand for 4 months and had a really good break from the work. This is the first time I have taken such a long break when developing one series. It has been a very valuable experience and something I shall incorporate into my art practice from now on. I arrived back in Leipzig in April and saw the works with totally fresh eyes - it almost seemed easy to work out what I needed to do to finish them.

I am currently in the middle of creating 120 gas mask mono-prints on small 18 x 24cm canvas boards. [Insert Photo 3. within text somewhere here...good size please]. I have divided the 120 pieces into 4 colour ways which will then be scattered across the whole work when it is hung as one piece. I think the hardest part will be working out the layout for hanging - balancing the colours, tones and textures.

I am looking forward to sharing my new work with NSAS members in February next year.

All the best, Lisa"



# Magic Pencil Store

Sole NZ Stockist of **Brush and Pencil** Products

*Unleash the true potential of coloured pencils with a unique set of tools by Brush and Pencil and create stunning artworks similar to those of the old masters of oil paint like da Vinci and Rembrandt.*

Using good quality, widely available oil-based and wax-based pencils you can experience, with the help of **Brush and Pencil** products (Powder Blender, Touch Up Texture etc), the freedom of practically unlimited layers and the possibility of working from dark to light, adding highlights towards the end of your composition. All this while enjoying the great advantages of the humble colour pencil, like precision, control, no mess and no waiting for paint to dry.

Find tips and tricks on Facebook under Magic Pencil and visit [www.magicpencil.co.nz](http://www.magicpencil.co.nz)



NEW LOCATION  
33 WAKATU LANE  
NELSON

QUALITY FRAMING  
INSPIRING IDEAS



VISIT OUR NEW  
GALLERY SPACE

## SUBSCRIPTIONS

Subscriptions are due in March each year. For details see the NSAS website [www.nsas.net.nz](http://www.nsas.net.nz)

For those who wish to pay by internet transfer our bank account number at the SBS is:

**03 1355051 5964 00**

Please quote SUB with your payment and your NAME. If you pay this way please email us if there are any changes needed to your contact details and how you wish to receive information from us. Otherwise subscriptions can be dropped into the Suter reception or posted to PO Box 751, Nelson 7040.

## CONTACTS AND DEADLINES

### Secretary (Advertising):

Kate Coote

**Phone:** 03 546 9567

**Email:** [katecoote@hotmail.com](mailto:katecoote@hotmail.com)

### Compiler / Editor:

Cathy Jones

**Phone:** 027 546 9499 or 03 5469499

**Email:** [cathy.jones@extra.co.nz](mailto:cathy.jones@extra.co.nz)

**Deadline:** Please forward all copy for November newsletter to Cathy Jones by **5 OCTOBER 2018**. Photos should be sent separately, not embedded in documents

## COMMITTEE

- Gabrielle Coote (*Patron*)
- Larisse Hall (*President / B.I.G.*)
- Nick Duncan (*1st Vice President / E.H.T*)
- Kate Coote (*Secretary / Members Registrar.*  
*Newsletter: Advertising*)
- Philippa Eberlein (*Treasurer*)
- Dana Rose (*Exhibitions Officer / B.I.G.*)
- Jenny Walker (*Volunteers / Social Coordinator*)

- Richard Blunt (*General Committee / E.H.T*)
  - Georgie Hoby Scutt (*General Committee / B.I.G*)
  - Peter Copp (*General Committee / B.I.G*)
  - Cathy Jones (*Newsletter Co-ordinator*)
  - Robert Thompson (*General Committee*)
  - Ken Laws (*General Committee*)
  - Sandy Paterson (*Membership*)
- B.I.G :** Brilliant Ideas Group  
**E.H.T :** Exhibitions Hanging Team

**COPYART**  
BeyondPRINT

**COMPLETE**  
Print & Copy Service

Sharpest **Fine Art**  
Scans Available

247 Queen Street, Richmond 7020

Professional  
**CANVAS +  
ART MEDIA**

**FINE ART**  
**Reproduction**

**(03) 544 6125**  
[print@copyart.co.nz](mailto:print@copyart.co.nz)  
[www.copyart.co.nz](http://www.copyart.co.nz)